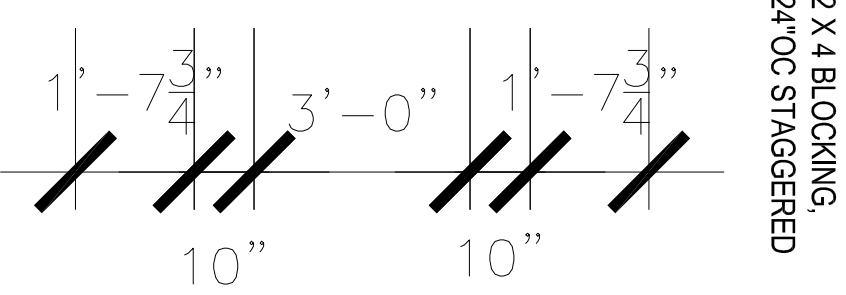
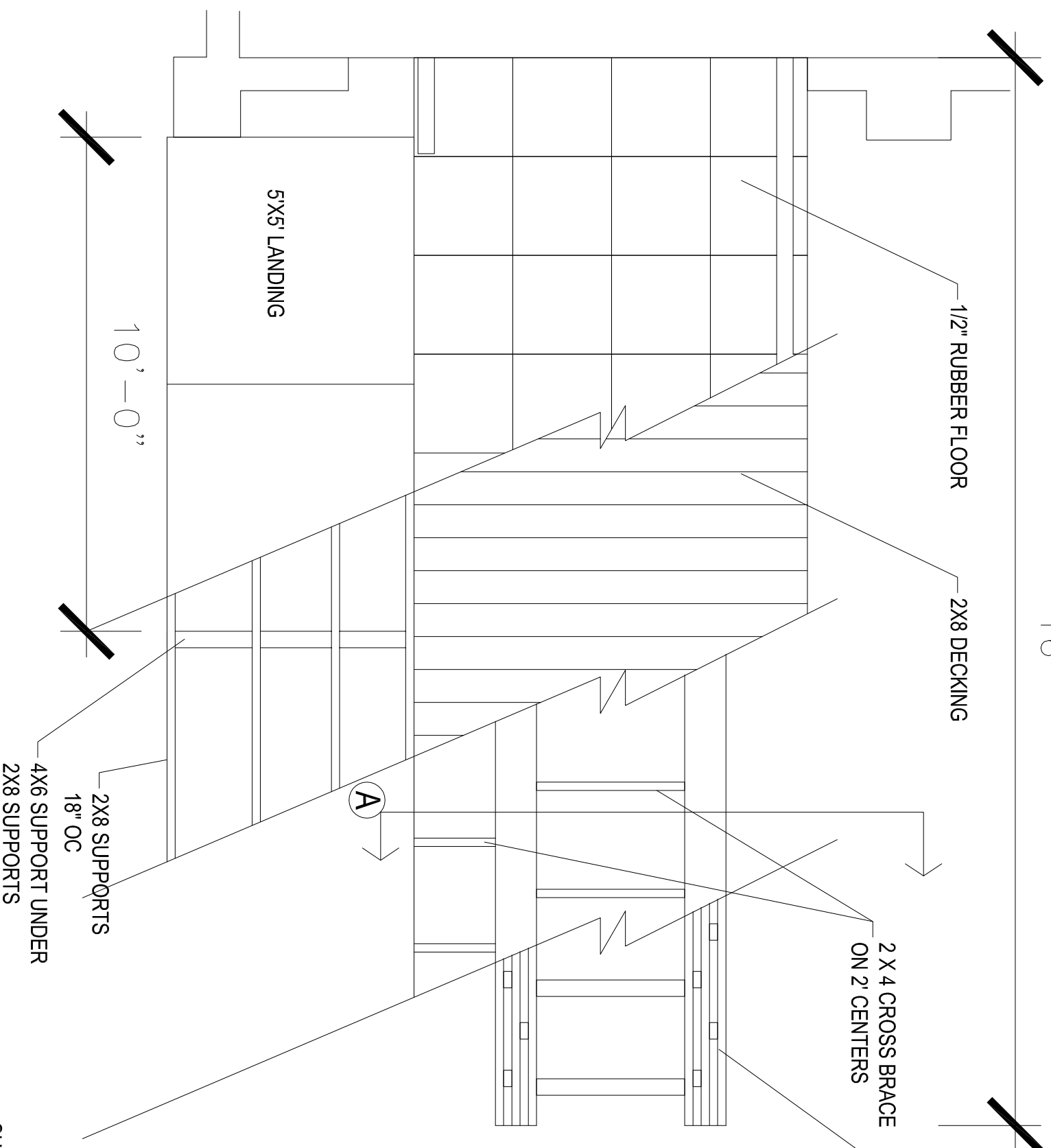


21'-7 $\frac{5}{16}$ "



check this dimension!

NOTES:
ATTACH BEAMS TO GROUND WITH METAL ANGLE FASTENERS AND COMPRESSION BOLTS
ALL LUMBER TO BE PRESURE TREATED

SURFACE REVEAL:
SOUTHEAST ENTRANCE

SCALE: 3/8" = 1'-0"

ICELAND ICE ARENA - 1430 DEL PASO BLVD

12/19/10

SOUTHEAST ENTRANCE