

ELECTRICAL ONE-LINE DIAGRAM

NO SCALE

ICELAND SKATING RINK RESTORATION PROJECT

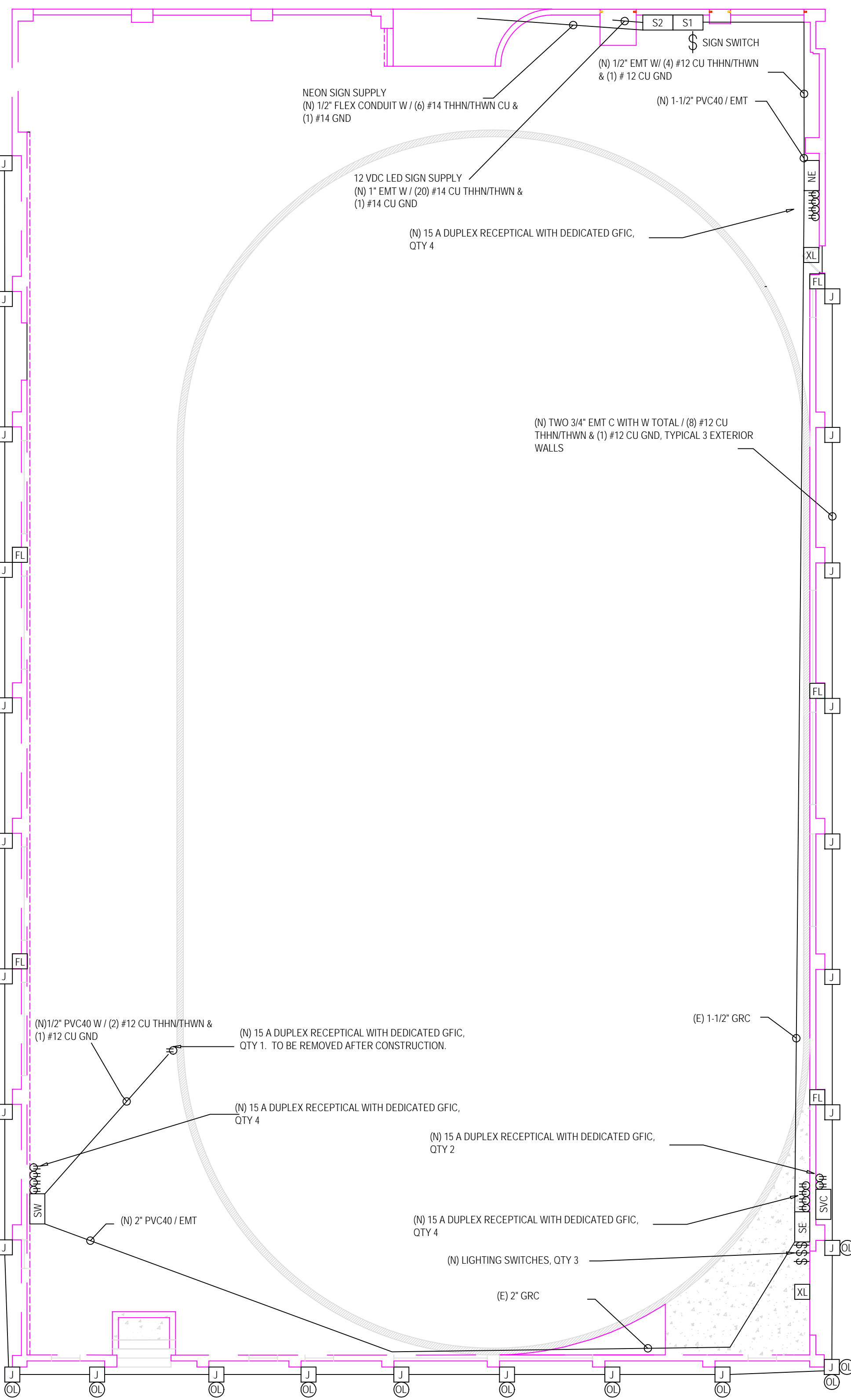
CONDUIT FILL CALCULATION

Service Conductors	Total		
Number of Conductors	4	4	
AWG		3/0	
Area	1.0716	1.0716	
Pipe required		2 inch	
Meter / 200A Switch feed			
Number of Conductors	5	4	1
AWG		3/0	2
Area	1.1874	1.0716	0.1158
Pipe required		2 INCH	
SE Panel Feed			
Number of Conductors	5	4	1
AWG		3/0	2
Area	1.1874	1.0716	0.1158
Pipe required		2	
SW Panel Feeds			
Number of Conductors	4	4	
AWG		6	
Area	0.2028	0.2028	
Pipe required		3/4	
NE Panel Feeds			
Number of Conductors	4	4	
AWG		6	
Area	0.2028	0.2028	
Pipe required		3/4	
GND Electrode			
Number of Conductors	1	1	
AWG		2	
Area	0.1158	0.1158	
Pipe required		1/2	

ABBREVIATIONS

ABBREVIATIONS

C	CONDUIT
C. O.	CONDUIT ONLY WITH PULL ROPE
CKT	CIRCUITS
(E)	EXISTING
EMT	EMT CONDUIT
GFIC	GROUND FAULT INTERRUPTER CIRCUIT
GND	GROUND
GRC	RIGID CONDUIT
MCB	MAIN CIRCUIT BREAKER PANEL
MLO	MAIN LUG ONLY PANEL
(N)	NEW
NEU	NEUTRAL
PVC	PVC CONDUIT, SCH 40
PFB	PROVISION FOR FUTURE BREAKER
RIG	RIGID CONDUIT
WP	WEATHER PROOF



NOTES

- SMUD SERVICE WILL INITIALLY BE 240V, 200A, 4 WIRE DELTA CONNECTED. SERVICE WILL CHANGE TO 208V, 200A, 4 WIRE WYE CONNECTION AT FUTURE DATE.
- PER NOTE 1, "A" PHASE CONDUCTOR, ~200V, SHALL BE MARKED WITH ORANGE TAPE AND SHALL NOT BE USED FOR 120V CIRCUITS.
- PER NOTE 1, ALL PANELBOARDS SHALL HAVE NAME PLATES NOTING SERVICE TYPE AND VOLTAGE. NAME PLATES SHALL BE UPDATED WHEN SERVICE CHANGES AT FUTURE DATE.
- ALL PANELBOARDS SHALL BE RATED FOR SPECIFIED VOLTAGE OR HIGHER.
- ALL ENCLOSURES SHALL BE RAIN PROOF, NEMA 3R.
- GFIC CIRCUIT BREAKERS SHALL BE USED ON BRANCH CIRCUITS WITH RECEPTACLES.
- ALL RECEPTACLES SHALL BE EQUIPPED WITH IN-USE RAIN COVERS.
- FLOODLIGHTS (FL) WILL BE MOUNTED ON 21' 2" RIGID CONDUIT POLES ATTACHED TO BUILDING CONCRETE WALLS.
-

FIXTURES

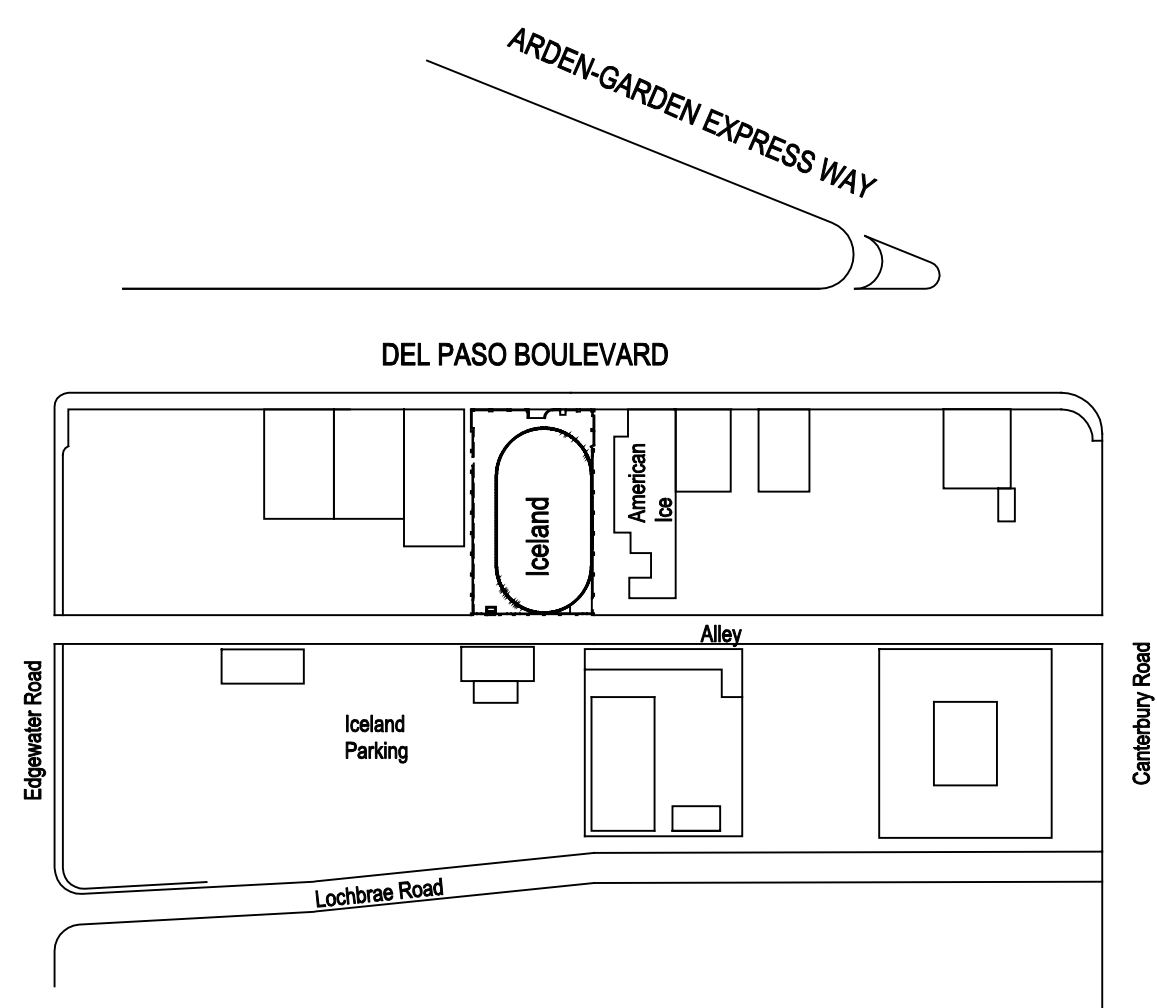
FL	FLOOD LIGHT	250W PSMH, 16' X 16' POLE MOUNT	E-CONOLIGHT E-HRP250Z
OL	OUTDOOR LIGHT	23W CFL PAR 38 IN OUTDOOR LAMP HOLDER	COMMERCIAL
XL	EXIT SIGN WITH LIGHT	NEMA 4R LED EXIT SIGN WITH LIGHT, BATTERY	GREENTORCH XLWC

LOAD CALCULATION

LOAD	KVA	DESCRIPTION
4	KVA	CONTINUOUS NON-MOTOR
1.0	KVA	25% CONTINUOUS NON-MOTOR
2	KVA	NON-CONTINUOUS
30	KVA	RECEPTACLE (FIRST 10KVA)
14.2	KVA	RECEPTACLE (BALANCE AT 50%)
0.5	KVA	MOTOR LOAD
0.1	KVA	25% OF LARGEST MOTOR
0	KVA	KITCHEN EQUIPMENT
0	KVA	HOTEL/MOTEL DEMAND
0	KVA	ARC WELDERS
0	KVA	RESISTANCE WELDERS
51.8	LOAD KVA	
127.0	AMPS AT 240 V 3 PHASE	

SYMBOLS

- J JUNCTION BOX
- S# ENCLOSURE
- SE PANELBOARD
- XL EXIT SIGN WITH BATTERY LIGHT
- FL FLOOD LIGHT, POLE MOUNTED
- OL OUTDOOR LIGHT, PAR STYLE WITH LAMP HOLDER
- ⊕ RECEPTACLE, 15 A, 120 V, DUPLEX WITH IN-USE COVER
- ⚡ SWITCH, SPST, 15 A



ICELAND VICINITY

NO SCALE

ICELAND SKATING RINK RESTORATION PROJECT

<p>ICELAND SKATING RINK RESTORATION</p> <p>1430 DEL PASO BLVD</p> <p>SACRAMENTO CALIFORNIA 95815</p>		<p>OWNER / APPLICANT</p> <p>ROB KERTH</p> <p>SACRAMENTO, CALIFORNIA 95815</p> <p>PHONE 916-799-3121</p>
<h1>ELECTRICAL PLAN</h1>		

<p>NOT TO SCALE</p> <p>DRAWN 11-11-10</p>	<p>REVISIONS</p> <table border="1"> <thead> <tr> <th>DATE</th> <th>REVISIONS</th> </tr> </thead> <tbody> <tr> <td> </td> <td> </td> </tr> </tbody> </table>	DATE	REVISIONS		
DATE	REVISIONS				

<p>REVISION NUMBER</p> <p>COMMENT REF. #</p> <p>REVISION (CLOUD)</p>
--